



The Chesapeake

4 BEDROOMS - 2.5 BATHROOMS - 3 CAR GARAGE + WORKSHOP
2,377 Finished Sq.Ft. - 3,394 Total Sq.Ft.

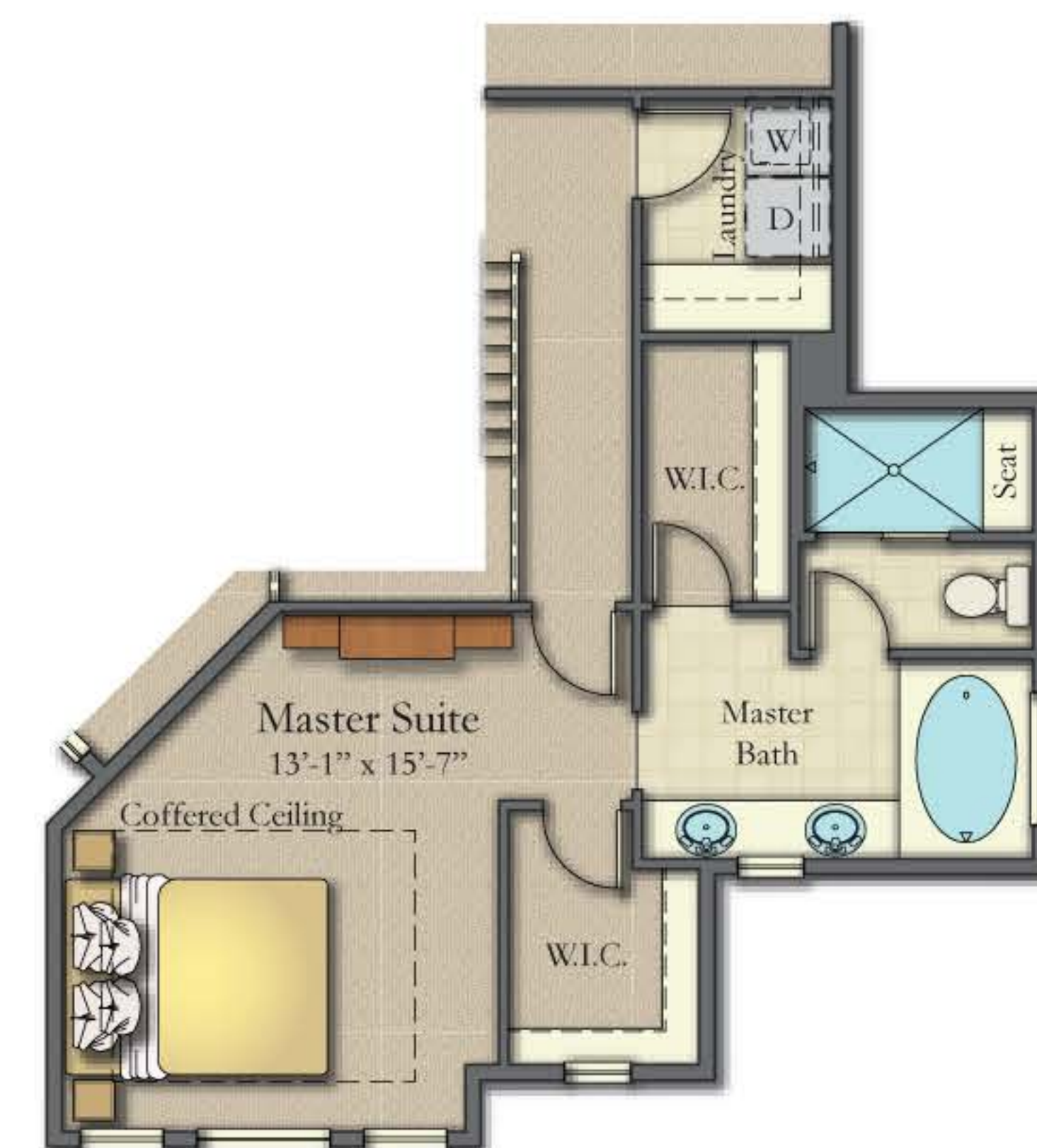
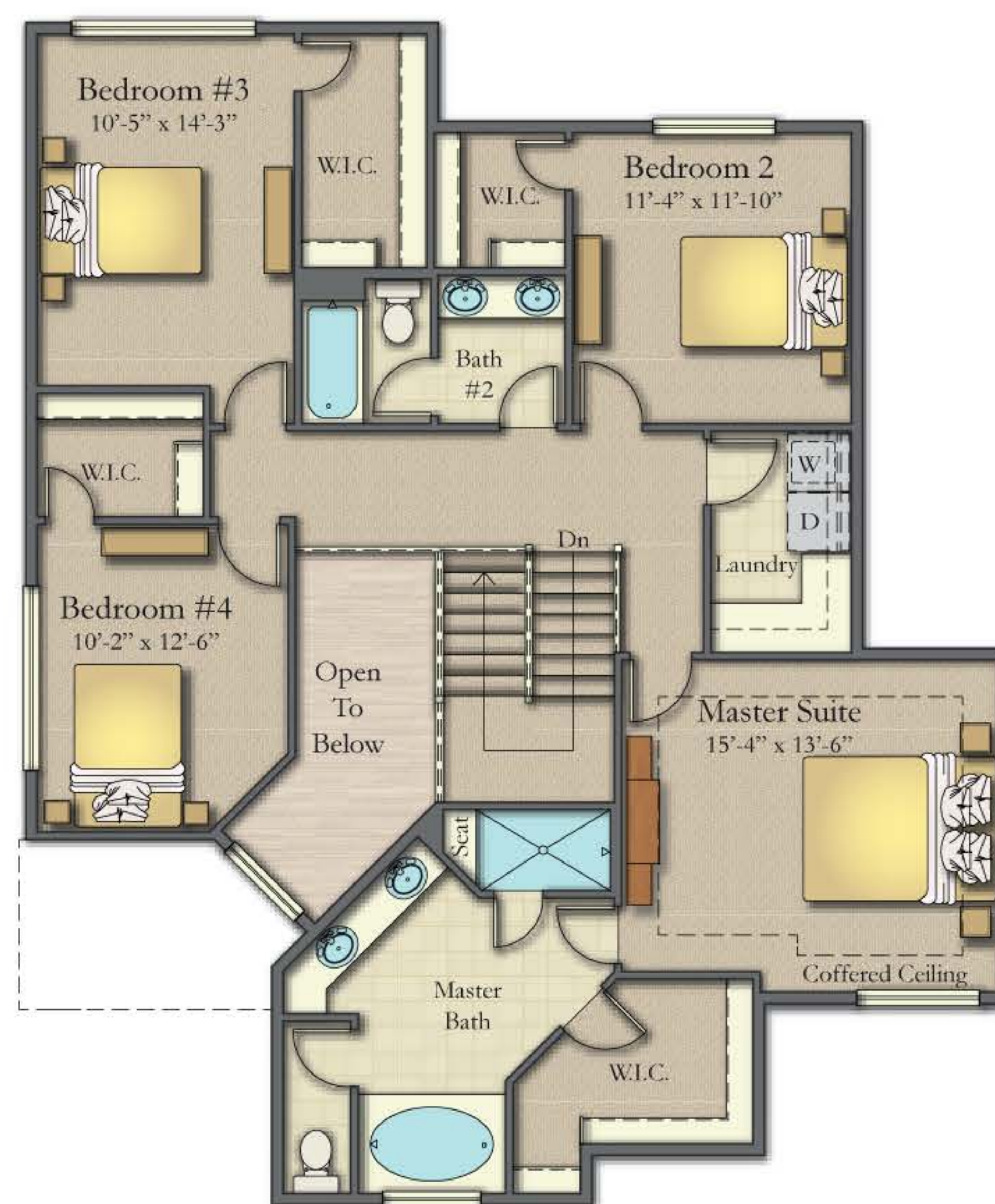
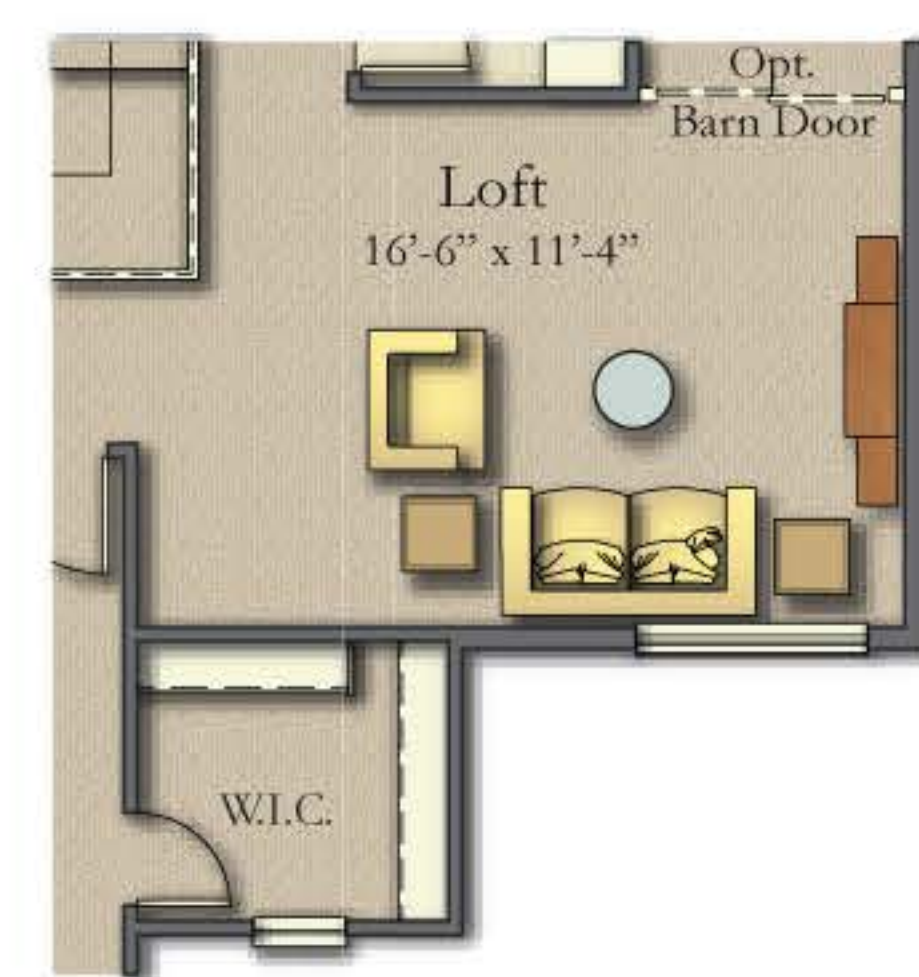
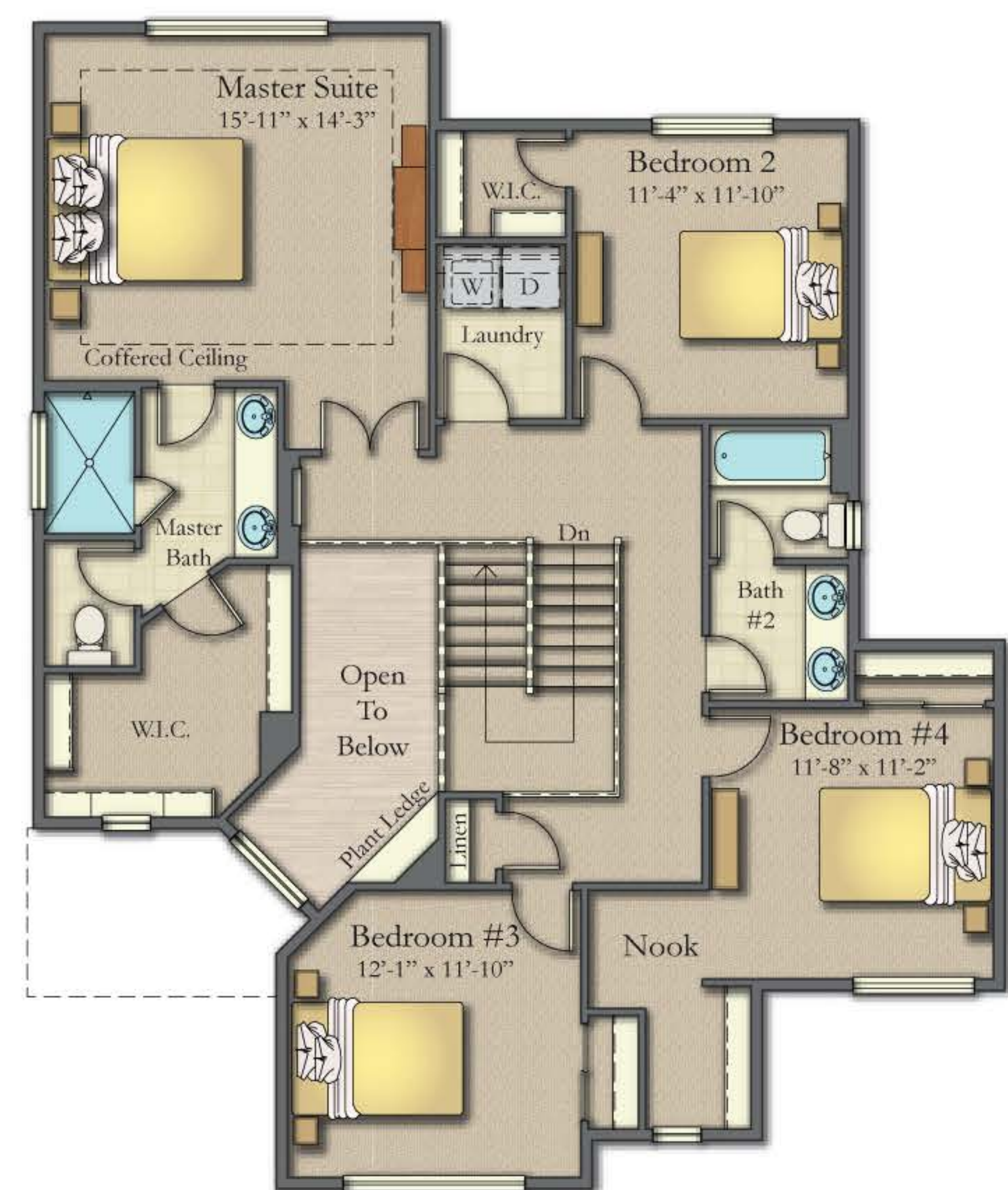
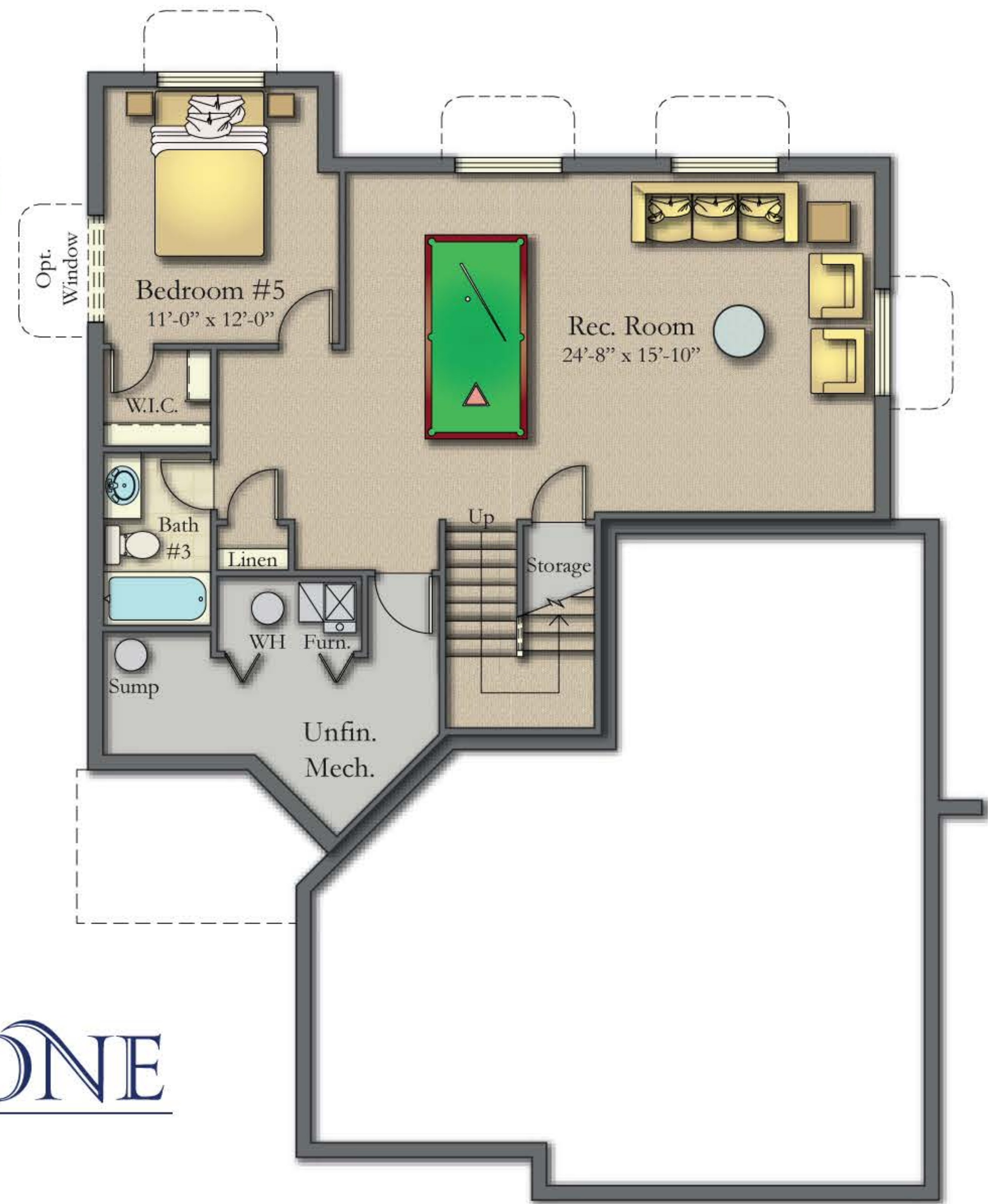
- | | |
|--|--|
| Impressive main level living | Two-Story vaulted foyer |
| Upper level laundry | Upper level bedrooms and two full bathrooms |
| Master suite includes a private 5-piece bathroom | Great room style kitchen, dining and family room |
| Oversized Walk-In Closet | 3 car garage + Workshop |
| All standard "upgrades" included in this plan | Optional finished basement |

Pictured elevation: Prairie Elevation

Updated 7-11-18

EXPECT THE EXCEPTIONAL WITH BROOKSTONE HOMES
719-494-5113 - BROOKSTONECOLORADO.COM

The Chesapeake Floorplan



**Specifications subject to change without notice.*

Updated 7-11-18

EXPECT THE EXCEPTIONAL WITH BROOKSTONE HOMES

719-494-5113 - BROOKSTONECOLORADO.COM